

Petaluma Water Ways self-guided tour (updated 2013)

BY BICYCLE <http://routebuilder.org/88b>

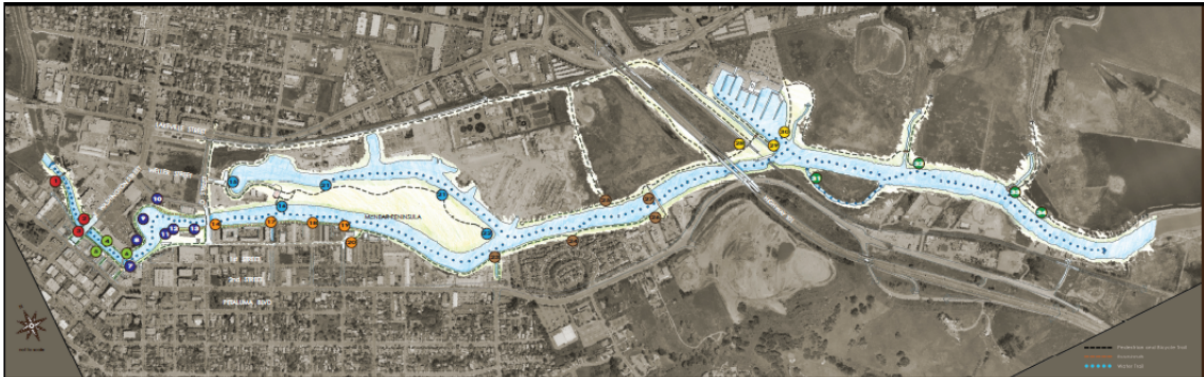
Together we can make Petaluma become a world-class river town! You can begin by helping to spread the word about the community's vision for a vibrant river way. In addition, consider adopting a project, forming or participating in a work group, and helping fund this important and exciting work. To learn more, visit petalumawaterways.org.

Tour starts at . . . foot of the Southern Crossing

Tour ends at . . . Shollenberger Overlook

Total distance approximately 7 miles

Petaluma Water Ways is based on the city of Petaluma's 1996 River Access and Enhancement Plan. To see all the sites envisioned as part of an interconnected waterfront, see the map below (enlargeable on the website).



To enlarge, download this map at <http://www.cityofpetaluma.net/parksnrec/pdf/PetalumaRiver091010.pdf>

Note: you will encounter a wide variety of surfaces in this tour, including railroad tracks, cobblestones, timbers, pavement, and sand and gravel. All routes are shared with pedestrians or cars, or both.

This tour starts at the foot of the future SOUTHERN CROSSING (27) at the roundabout on Petaluma Blvd. South and Crystal Lane.

27 [SOUTHERN CROSSING \(CAULFIELD EXTENSION\)](#) New bridge accommodates pedestrians and bikes; design reflective of historical river events.

Petaluma Water Ways self-guided tour (updated 2013)

Pause here to contemplate the ramifications of a multimodal bridge over the river linking to the Rails-to-trails project going south.

Across the river is a likely site for the future COMMUNITY BOATHOUSE (25A) within a proposed SEVEN ACRE PARK (25).

Continue north on the Boulevard as shown for bike routes in the River Access and Enhancement Plan. Turn right into McNear Landing housing development and ride to the waterfront at MCNEAR LANDING PARK (24), where a very short stretch of waterfront path is one of the trail fragments already built. Backtrack to the Boulevard; as you ride north you will pass the proposed MOUNTAIN VIEW TRAIL CONNECTOR (23).

Turn right on H Street and go to the water. Pause at the H STREET LANDING (19) to contemplate the ramifications of a combined trolley stop, water taxi stop, small craft launch, and connector to the pedestrian-friendly future WAREHOUSE DISTRICT BOARDWALK (14). This park and the G STREET LANDING (18) one block up First Street were

25 [PROPOSED SEVEN-ACRE PARK](#)
Site to include water access and recreational amenities including fixed deck with benches, restroom, floating dock, and earth sculptures (from dredging spoils). Includes 25A, ALTERNATIVE SMALL CRAFT CENTER SITE.

24 [MCNEAR LANDING PARK](#) Add small craft landing and wayfinding sign.

23 [MOUNTAIN VIEW TRAIL CONNECTOR](#) Neighborhood access to river trail that provides vista of river and wind sculpture on McNear Peninsula. Ideal area for demonstration storm runoff treatment site.

19 ["H" STREET LANDING](#) Includes fixed fishing dock with benches, floating dock, and interpretive kiosk. Linear park with picnic area connects to landing.

14 [WAREHOUSE DISTRICT BOARDWALK/"D" STREET UNDERCROSSING](#) Improvements include a boardwalk with rail, landscaping, lighting, and land and water-oriented wayfinding signs. Integrate overlook decks as feasible.

18 ["G" STREET LANDING](#) Includes fixed fishing dock with floating dock. Benches and public art enhance this area.

Petaluma Water Ways self-guided tour (updated 2013)

constructed by volunteers with Rebuilding Together and Leadership Petaluma in spring 2011. They are maintained by the owner of adjacent commercial property, Walt Haake.

Proceed up First Street. A vista point at the proposed THOMPSON CREEK OVERLOOK (17) offers a nice view of the River Heritage Center on McNear Peninsula. Cross D Street (where the San Francisco Bay Area Ridge Trail crosses the river) and proceed to the end of C STREET LANDING (12) in front of the possible ALTERNATIVE COMMUNITY BOATHOUSE SITE (13). On your left is the C STREET PUMP STATION (11).

Backtracking to the open space behind the Theater District building, continue upstream to the TRESTLE (7). Pause to consider the future of this bustling exchange of trolley riders, walkers and cyclists, outdoor diners, and boaters. Keeping the Old Mill on your left, continue up WATER STREET (5), crossing Washington at the proposed WASHINGTON BRIDGE GATEWAY (3), and ride up North Water Street to the pipelines across the river,

- 17 [THOMPSON CREEK OVERLOOK](#)
New deck highlights view of River Heritage Center.
- 12 ["C" ST. LANDING](#) Improvements include fishing pier reconstruction, connecting to floating docks and trail, and additional landscaping. Connect to Small Craft Center.
- 13 [ALTERNATIVE SMALL CRAFT CENTER SITE](#) Redevelop existing building into Small Craft Center housing small craft and restrooms. Add landing area, landscaping, and wayfinding signs.
- 11 ["C" ST. PUMP STATION](#) Develop riverfront amphitheater seating, overlooks and boardwalk. Connect to 'C' St. Landing and Small Craft Center. Maintain large vehicle access to pump station.
- 7 [HISTORIC DOWNTOWN TRESTLE](#)
Reconstruct piers, renovate existing Petaluma and Santa Rosa Railroad trestle. Add landscaping, trees, lighting, and interpretive and wayfinding signs.
- 5 [WATER STREET](#) Enhance existing walk with landscaping, lighting, wayfinding signs, and nautical large-scale marine artifacts as sculpture (along with appropriate theme sculptures). Extend retail/restaurant uses from existing buildings to take advantage of river view and trail/boardwalk activities.
- 3 [WASHINGTON STREET GATEWAY](#)
Enhance river overcrossing and add wayfinding signs.
- 1 [COPELAND CROSSING](#). Extend trail and access road to planned pedestrian/bike bridge and

Petaluma Water Ways self-guided tour (updated 2013)

site of the COPELAND CROSSING (1) connecting Petaluma Water Ways with the Lynch Creek Trail and East Petaluma.

Backtrack downstream on Water Street, and cross the BALSHAW BRIDGE (6) to the GOLDEN EAGLE WATERFRONT (4). The service alley behind the stores and restaurants will be the future GOLDEN EAGLE OVERLOOK (4).

Crossing the parking lot, pause at the steps and gangway leading down to the docks for a view of the TURNING BASIN (9). To your right is the site of the future SMALL CRAFT RENTAL CENTER (9A). Ride out to Washington and turn right on Weller to rejoin the river at CAVANAGH LANDING PARK (10), linking the Turning Basin with the bus plaza and train depot.

Proceeding down Weller, jog left on D and right at Copeland to enter STEAMER LANDING PARK (16). From the parking lot overlooking McNear Channel, you can go right to explore the RIVER HERITAGE CENTER (15).

proposed small craft landing area. Include landscaping, lighting and wayfinding signs.

6 [BALSHAW BRIDGE](#) Add focal gathering plaza at base of bridge that includes public art, landscaping, wayfinding signs, and seating areas.

8 [GOLDEN EAGLE WATERFRONT AREA](#) Encourage riverfront plazas as part of redevelopment efforts. Possibilities include regional marketplace and outdoor community plaza with tables and chairs, shade trees, etc., for dining and special event observation, river-oriented retail, etc.

4 [GOLDEN EAGLE OVERLOOK](#) Overlook decks with seating emphasize connections to future mixed use properties. Add curvilinear pedestrian walk, lighting, landscaping, and wayfinding signs.

9 [TURNING BASIN](#) Add new floating dock space, tie-up area for dining, overnight, weekend, etc. Includes 9A, SMALL CRAFT RENTAL CENTER.

10 [CAVANAGH LANDING](#) Expand current park and open space area. Enhance connection to Transit Center.

16 [STEAMER LANDING PARK](#) Existing parking and trail provides access to historic McNear Peninsula and the River Heritage Center (historic livery stable). Future plans call for additional trails, overlooks, interpretive features, small craft landings, and restoration efforts.

15 [DAVID YEARSLEY RIVER HERITAGE CENTER](#), where Friends of the Petaluma River is pursuing expanded educational programming.

Petaluma Water Ways self-guided tour (updated 2013)

Turn left and continue along the waterfront until the path turns in to Hopper Street. Continue down Hopper to Caulfield. It is here that Petaluma Water Ways arrives at private property lines. Future developments (Rails-to-Trails, etc.) will make these areas accessible, but in the meantime, to avoid trespassing, take the .3-mile detour up Caulfield to Lakeville, cross under the Freeway, and turn right into the Marina parking lot. This is the only public bathroom on this route (limited hours).

Keeping the boat ramp on your left and the HarborMaster's office on the right, walk out to the SWINGBRIDGE OVERLOOK (29). From there you can wind your way through the parking lot and past the yacht harbor gates to the MARINA OVERLOOK (30), offering a view of ITALIAN GARDEN SLOUGH (31) across the river. Backtrack to the entrance to Alman Marsh and ride the trail past the future ALMAN MARSH OVERLOOK until it crosses a bridge into Shollenberger Park. Turn right to the. Take the loop trail toward the river and you will arrive at the proposed ADOBE CREEK

- 29 [SWINGBRIDGE OVERLOOK](#)
Interpretive area with seating and fishing access. Possible site for water-oriented wayfinding sign.
- 30 [MARINA POINT OVERLOOK](#)
Overlook/interpretive area with seating; improved fishing access. Possible site for water-oriented wayfinding sign.
- 31 [ITALIAN GARDEN SLOUGH](#)
Waterway for small watercraft and nature experience. Clean and revegetate existing channel for habitat renewal. Potential small craft landing.
- 32 [ALMAN MARSH OVERLOOK](#). Add seating and interpretive area. A racecourse 1000m marker facing up and downstream is well positioned here.
- 33 [ADOBE CREEK INTERPRETIVE AREA](#) Salmon restoration efforts to include strategic boulder placement, revegetation, and informal boat landing.
- 34 [SHOLLENBERGER OVERLOOK](#)
Add small craft landing (if floating dock incorporated, align to not obstruct with river traffic), restroom, and interpretive kiosk. Possible site for water-oriented wayfinding sign.

Petaluma Water Ways self-guided tour (updated 2013)

INTERPRETIVE AREA (33) and the
SHOLLENBERGER OVERLOOK (34).

Only YOU can assure that Petaluma Water Ways and the Petaluma River Access and Enhancement Plan are built out in your lifetime. Advocate for the river. Get your group, organization, or club to “adopt” a project. Help raise your community’s consciousness and civic willpower to make it all happen!